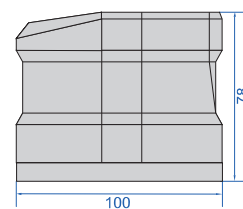
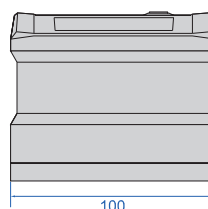
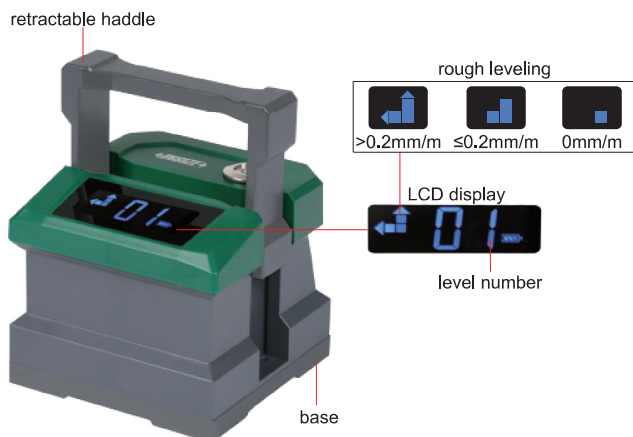


BUILT-IN
BLUETOOTH

BLUETOOTH DUAL-AXIS DIGITAL LEVEL



Unit: mm

4954-1A

- Measure the level of machine tools and other planner equipment, for installation and leveling
- Built-in bluetooth, transmission distance is 20 meters (under the condition of no obstruction and no electromagnetic interference)
- Can display one level, can also display two or more (up to 4 levels at a time)
- Android and iPhone APP are included
- Unit: mm/m, °
- Automatic power off
- Power supply: 3xAAA batteries, for 15h continuous working
- Optional accessory: handheld display (Code 4954-DPE)

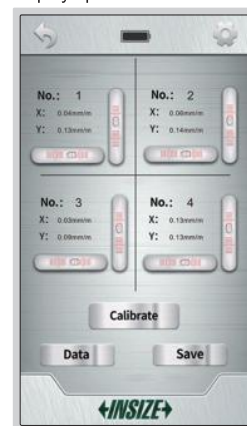
Code	Range	Resolution	Accuracy	Net weight
4954-1A	±0.5mm/m	0.01mm/m	±0.02mm	1.6kg

OPTIONAL ACCESSORY

Handheld display

4954-DPE

display up to 4 levels at a time



data output

